

Catalogue Overview 29

AC/DC & DC/DC Converters

AC Adapters



Medical



Industrial



Lighting



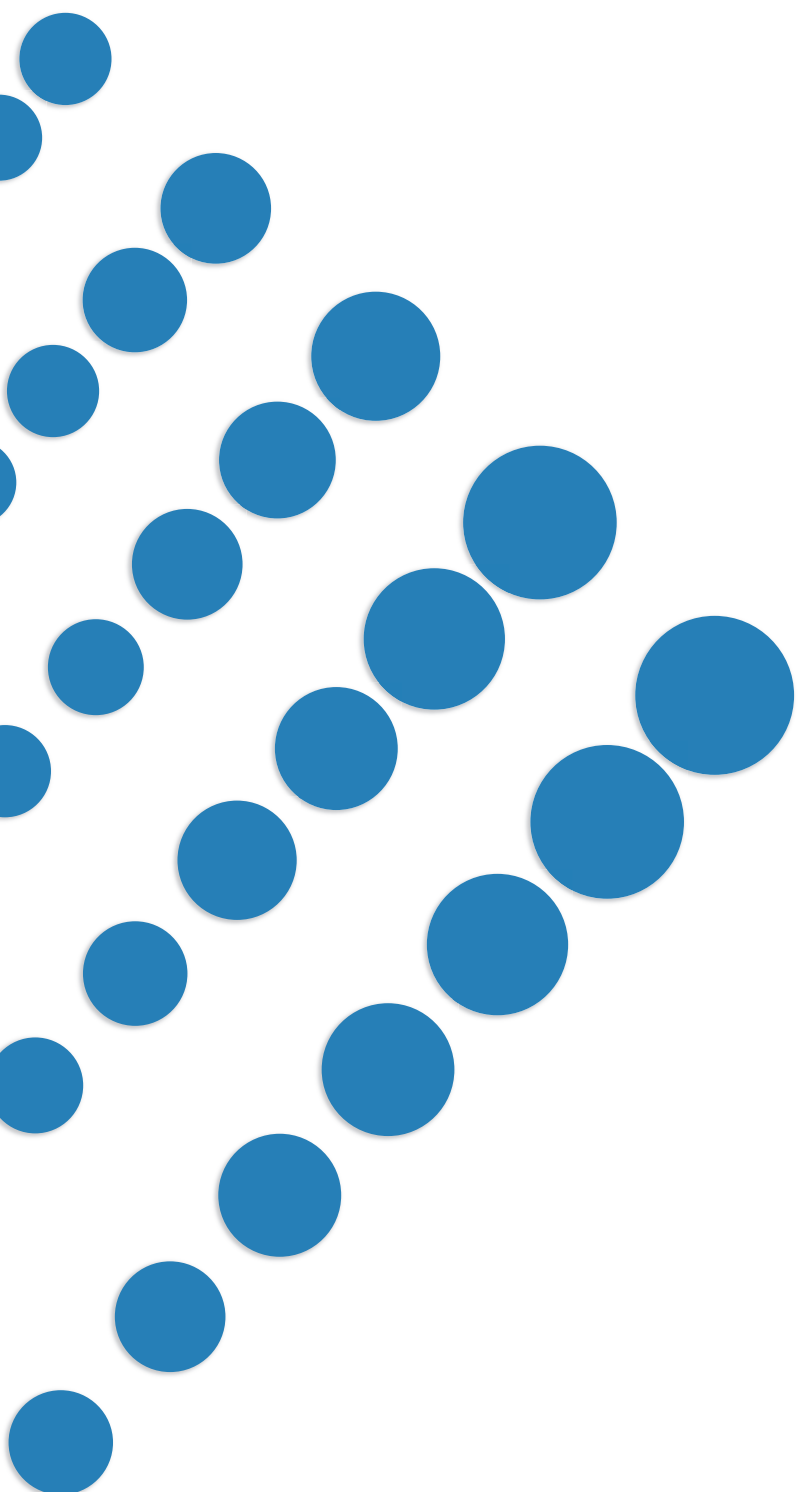
Transportation



Renewable Energy



IoT



The Aimtec brand is associated with quality, value and service. Headquartered in Canada with offices in Europe and Asia, Aimtec is actively involved in the research and development of modular switching power supplies. Aimtec's designs assist customers worldwide in reducing engineering design time and expense, while facilitating miniaturization and performance enhancement of their applications.



Table of Contents

DC/DC Converters	4
Switching Regulators	15
AC/DC Converters	17
AC Adapters	26

4



DC/DC Converters (isolated)



One of the industry's largest and most complete product offering of 1 to 3 Watt converters **just got LARGER!**

Over 7700 models overall (4000+ between 1 ~ 3 watt)

Output power: ¼ W ~ 300W

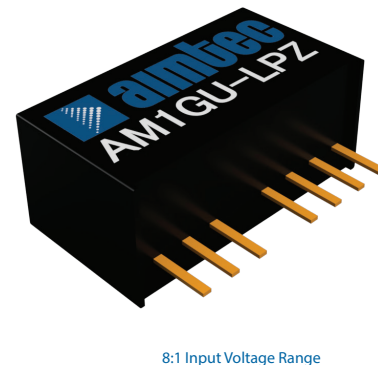
Input range: up to 8:1

Input / Output isolation: 1000 ~ 6000VDC, up to 5000VAC

Industrial operating temperature range: -40 °C cold start up to 105 °C

Industry standard pin configurations

Wide assorted packages: SIP, DIP, SMD, 1x1", 2x1", 2x1.6", 2x2", Quarter Brick, Half Brick



AIMTEC's Low Power Win Series



aimtec
Your Power Partner

Many Package Types



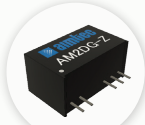
SIP7



SIP4



DIP14



SIP7



SIP8



DIP8



SMD



SMD

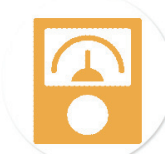
Features

- Power range from 1 to 3W
- CE & UL available
- Up to -40 to 105 °C operating temperature
- Multiple packages available
- High efficiency
- 3 year warranty
- Compact packages
- High isolation up to 6000VDC
- Competitive lead times
- Single and dual outputs available

Applications



Industrial



Portable Equipment



Medical



Power Grid



IoT



Telecom

Series

- AM1SS-EZ
- AM2SS-EZ
- AM1DS-EZ
- AM1DS-LPZ
- AM2DS-EZ
- AM1LS-EZ
- AM2LS-EZ
- AM1LS-LPZ
- AM2LS-LPZ
- AM1PS-EZ
- AM1DM-EZ
- AM2DM-EZ
- AM2DG-LPZ



1/4 Watt



AM1/4S-Z SIP4

SERIES	INPUT (VDC)	SINGLE OUTPUT (VDC)	DUAL OUTPUT (VDC)	DUAL SEPARATED OUTPUT (VDC)	ISOLATION (VDC)	CASE	SAFETY
AM1/4S-Z	5, 12, 15, 24	3.3, 5, 7.2, 9, 12, 15, 18, 24	--	--	1K, 3K	SIP4	CE

1/2 Watt



AM1A-Z SIP6

AM1/2S-Z	3, 5, 12, 15, 24	3.3, 5, 7.2, 9, 12, 15, 18, 24	--	--	1K, 3K	SIP4	CE
----------	------------------	--------------------------------	----	----	--------	------	----

1 Watt



AM1G-Z SIP8

AM1A-Z	4.5-9, 9-18, 18-36, 36-75	5, 12, 15, 24	±12, ±15	--	1.5K	SIP6	CE, UL
AM1D-Z	3.3, 5, 12, 15, 24	3.3, 5, 7.2, 9, 12, 15, 18, 24	±3.3, ±5, ±7.2, ±9, ±12, ±15, ±18, ±24	3.3/3.3, 5/5, 7.2/7.2, 9/9, 12/12, 15/15, 18/18, 24/24	1K, 3K, 4K, 5.2K, 6K	SIP7	CE, UL
AM1D-RZ	5, 12, 15, 24, 48	5, 9, 12, 15	±5, ±9, ±12, ±15	--	1K, 3K	SIP7	CE
AM1DC-Z	5, 9, 12, 15, 24	3.3, 5, 9, 12, 15	±3.3, ±5, ±9, ±12, ±15, ±15/-9	--	6K	SIP7	CE
AM1DM-EZ	3.3, 5, 12, 15, 24	3.3, 5, 12, 15, 24	--	--	6K	SIP7	CE, UL
AM1DM-LPZ	5, 9, 12, 15, 24	3.3, 5, 12, 15, 24	±5, ±9, ±12, ±15	--	6K	SIP7	CE
AM1DR-Z	5, 12, 24	3.3, 5, 7.2, 9, 12, 15	--	--	1K, 3K	SIP7	CE
AM1DR-RZ	5, 12, 24	3.3, 5, 7.2, 9, 12, 15	--	--	1K	SIP7	CE
AM1DR-EZ	5, 12, 15, 24	3.3, 5, 9, 12, 15	--	--	1.5k, 3k	SIP7	CE
AM1DR-LPZ	5, 12, 24	3.3, 5, 12, 15, 24	--	--	1.5K, 3K	SIP7	CE
AM1DS-Z	5, 12, 24	5, 12, 15	±5, ±12, ±15	--	1K, 3K, 4K, 5.2K, 6K	SIP7	CE
AM1DS-EZ	3.3, 5, 9, 12, 15, 24	3.3, 5, 9, 12, 15, 24	±3.3, ±5, ±9, ±12, ±15, ±24	--	1.5K, 3K	SIP7	CE
AM1DS-LPZ	3.3, 5, 9, 12, 15, 24	3.3, 5, 9, 12, 15, 24	±3.3, ±5, ±9, ±12, ±15, ±24	--	1.5K, 3K	SIP7	CE
AM1DS-RZ	3.3, 5, 12, 24	3.3, 5, 12, 15	±3.3, ±5, ±12, ±15	--	3K, 6K	SIP7	CE
AM1G-Z	4.5-9, 9-18, 18-36, 36-72	3.3, 5, 7.2, 9, 12, 15, 18, 24	±3.3, ±5, ±7.2, ±9, ±12, ±15, ±18, ±24	--	1K, 3K	SIP8	CE, UL
AM1G-EZ	5-9, 9-18, 18-36, 36-72	5, 9, 12, 15, 24	±5, ±9, ±12, ±15, ±24	--	1.5K	SIP8	CE
AM1G-LPZ	4.5-9, 9-18, 18-36, 36-75	3.3, 5, 12, 15, 24	±5, ±12, ±15	--	1.5K	SIP8	CE



AM1LS-LPZ SMD



AM1PS-LPZ DIP8



AM1SS-EZ SIP4

1 Watt (con't)

SERIES	INPUT (VDC)	SINGLE OUTPUT (VDC)	DUAL OUTPUT (VDC)	DUAL SEPARATED OUTPUT (VDC)	ISOLATION (VDC)	CASE	SAFETY
AM1GH-LPZ	4.5-18, 9-36, 18-75	3.3, 5, 12, 15	±5, ±12, ±15	--	3K	SIP8	CE
AM1GU-LPZ	4.5 - 36	5, 9, 12, 15, 24	±5, ±12, ±15	--	3K	SIP8	CE, UL
AM1LR-LPZ	5, 12, 15, 24	3.3, 5, 9, 12, 15, 24	--	--	1.5k, 3K	SMD	CE
AM1LS-EZ	3.3, 5, 9, 12, 15, 24	3.3, 5, 9, 12, 15, 24	±3.3, ±5, ±9, ±12, ±15, ±24	--	1.5K, 3K	SMD	CE, UL
AM1LS-LPZ	3.3, 5, 12, 15, 24	3.3, 5, 9, 12, 15, 24	--	--	1.5K, 3K	SMD	CE, UL
AM1LS-LPVZ	5	3.3, 5, 9, 12, 15, 24	±3.3, ±5, ±9, ±12, ±15, ±24	--	3k	SMD	CE
AM1P-Z	3.3, 5, 12, 24	3.3, 5, 7.2, 9, 12, 15, 18, 24	±3.3, ±5, ±7.2, ±9, ±12, ±15, ±18, ±24	3.3/3.3, 5/5, 7.2/7.2, 9/9, 12/12, 15/15, 18/18, 24/24	1K, 3K	DIP8	CE
AM1PS-Z	5, 12, 24	5, 12, 15	--	--	1k, 3K	DIP8	CE
AM1PS-LPZ	3.3, 5, 12, 15, 24	3.3, 5, 9, 12, 15, 24	--	--	1.5K	DIP8	CE
AM1S-Z	3.3, 5, 12, 24	3.3, 5, 7.2, 9, 12, 15, 18, 24	--	--	1K, 3K	SIP4	CE
AM1SS-Z	5, 12, 24	5, 12, 15	--	--	1K, 3K	SIP4	CE
AM1SS-EZ	3.3, 5, 12, 15, 24	3.3, 5, 9, 12, 15, 24	--	--	1.5K, 3k	SIP4	CE, UL
AM1SS-LPZ	3.3, 5, 12, 15, 24	3.3, 5, 9, 12, 15, 24	--	--	1.5K	SIP4	CE



AM1LR-LPZ SMD



AM1DS-EZ SIP7



AM1DM-EZ SIP7



AM1LS-LPVZ SMD



2 Watt

SERIES	INPUT (VDC)	SINGLE OUTPUT (VDC)	DUAL OUTPUT (VDC)	DUAL SEPARATED OUTPUT (VDC)	ISOLATION (VDC)	CASE	SAFETY
AM2D-Z	5, 12, 24	3.3, 5, 7.2, 9, 12, 15, 18, 24	$\pm 3.3, \pm 5, \pm 7.2, \pm 9, \pm 12, \pm 15, \pm 18, \pm 24$	3.3/3.3, 5/5, 7.2/7.2, 9/9, 12/12, 15/15, 18/18, 24/24	1K, 3K, 4K, 5.2K, 6K	SIP7	CE
AM2D-RZ	5, 12, 15, 24	5, 9, 12, 15	$\pm 5, \pm 9, \pm 12, \pm 15$	--	1K, 3K	SIP7	CE
AM2DM-EZ	5, 12, 15, 24	5, 9, 12, 15, 24	$\pm 5, \pm 9, \pm 12, \pm 15, \pm 24$	--	6K	SIP7	CE, UL
AM2DM-LPZ	5, 12, 24	5, 9, 12, 15, 24	$\pm 5, \pm 9, \pm 12, \pm 15$	--	6K	SIP7	CE
AM2DG-LPZ	5, 12, 15, 24	9, 15, 17, 20	-9, -8.7, -8, -4	--	4K VAC	SIP7	CE
AM2DG-TT	12, 24	-15, -12, -9, -5, -3, 12, 15, 17, 18, 20	-15, -9, -5, -3.5, -3	--	6k	SIP7	CE, UL
AM2DG-Z	5, 12, 15, 24	15, 18, 20	-5, -3.5	--	5k VAC	SIP7	CE
AM2DS-Z	5, 12, 15, 24	3.3, 5, 9, 12, 15	$\pm 5, \pm 9, \pm 12, \pm 15, \pm 15/-9$	--	5.2K	SIP7	CE
AM2DS-LPZ	3.3, 5, 12, 15, 24	3.3, 5, 9, 12, 15, 24	$\pm 3.3, \pm 5, \pm 9, \pm 12, \pm 15, \pm 24$	--	1.5K, 3K	SIP7	CE
AM2DR-LPZ	5, 12, 24	3.3, 5	--	--	1.5k	SIP7	CE
AM2DS-EZ	5, 12, 15, 24	5, 9, 12, 15, 24	$\pm 5, \pm 9, \pm 12, \pm 15, \pm 24$	--	1.5K, 3K	SIP7	CE, UL
AM2DS-RZ	3.3, 5, 12, 24	3.3, 5, 12, 15	$\pm 3.3, \pm 5, \pm 12, \pm 15$	--	3K, 6K	SIP7	CE
AM2F-Z	5, 12, 24	3.3, 5, 7.2, 9, 12, 15, 18, 24	--	--	1K, 3K, 5.2K	SIP12	CE
AM2G-Z	4.5-9, 9-18, 18-36, 36-72	3.3, 5, 7.2, 9, 12, 15, 18, 24	$\pm 3.3, \pm 5, \pm 7.2, \pm 9, \pm 12, \pm 15, \pm 18, \pm 24$	--	1K, 3K	SIP8	CE, UL
AM2GH-Z	4.5-18, 9-36, 18-75	3.3, 5, 12, 15	$\pm 5, \pm 12, \pm 15$	--	1.6K	SIP8	CE
AM2GW-Z	9-36, 18-75	3.3, 5, 12, 15	$\pm 5, \pm 12, \pm 15$	--	1.5K	SIP9	CE, UL
AM2LS-EZ	5, 12, 15, 24	3.3, 5, 9, 12, 15, 24	--	--	1.5K, 3K	SMD	CE
AM2LS-LPZ	5, 12, 15, 24	5, 7, 9, 12, 15, 24	--	--	1.5K, 3K	SMD	CE
AM2M-LPZ	3.3, 5, 12, 15, 24	3.3, 5, 9, 12, 15, 24	$\pm 3.3, \pm 5, \pm 9, \pm 12, \pm 15, \pm 24$	--	3k	DIP14	CE
AM2S-Z	5, 12, 24	3.3, 5, 7.2, 9, 12, 15, 18, 24	--	--	1K, 3K	SIP4	CE
AM2SS-EZ	5, 12, 15, 24	5, 9, 12, 15, 24	--	--	1.5K, 3K	SIP4	CE
AM2SS-LPZ	5, 12, 24	5, 9, 12, 15, 24	--	--	1.5k	SIP4	CE
AM2IW-LPZ	12, 15, 24	15, 20	-9, -5, -4	--	5k VAC	SIP10	CE



AM2M-LPZ DIP14



AM2DS-LPZ SIP7



AM2DM-EZ SIP7



AM2SS-LPZ SIP4



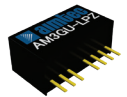
SERIES	INPUT (VDC)	SINGLE OUTPUT (VDC)	DUAL OUTPUT (VDC)	ISOLATION (VDC)	CASE	SAFETY
AM3D-Z	5, 12	5, 9, 12, 15	±5, ±9, ±12, ±15	1K, 3K	SIP7	CE
AM3A-Z	12, 24, 48	3.3, 5, 12, 15	±5, ±12, ±15	1.6k	SIP6	CE, UL
AM3DG-LPZ	12, 15, 24	15, 18, 20	-8.7, -8, -4, -2.5	4k VAC	SIP7	CE, UL
AM3F-Z	5, 12, 24	3.3, 5, 7.2, 9, 12, 15, 18, 24	-	1K, 3K, 5.2K	SIP12	CE
AM3G-EZ	9-18, 18-36, 36-75	3.3, 5, 9, 12, 15	±5, ±9, ±12, ±15	3K	SIP8	CE
AM3G-LPZ	4.5-9, 9-18, 18-36, 36-75	3.3, 5, 9, 12, 15, 24	±5, ±9, ±12, ±15, ±24	1.5k, 3K	SIP8	CE
AM3G-Z	4.5-9, 9-18, 18-36, 36-72	3.3, 5, 12, 15	±5, ±12, ±15	1.6K, 3K	SIP8	CE, UL
AM3GH-LPZ	4.5-18, 9-36, 18-75	3.3, 5, 12, 15, 24	±5, ±9, ±12, ±15	3k	SIP8	CE
AM3GH-Z	4.5-18, 9-36, 18-75	3.3, 5, 12, 15	±5, ±12, ±15	1.6K	SIP8	CE
AM3GW-Z	9-36, 18-75	3.3, 5, 12, 15	±5, ±12, ±15	1.5K	SIP9	CE, UL
AM3GU-LPZ	4.5-36	5, 12, 15	±5, ±12, ±15	3k	SIP8	CE
AM3DS-LPZ	5, 12, 15	3.3, 5, 9, 12, 15	-	3k	SIP7	CE
AM3T-Z	9-18, 18-36, 36-72	3.3, 5, 7.2, 9, 12, 15, 18, 24	±3.3, ±5, ±7.2, ±9, ±12, ±15, ±18, ±24	1.5K, 3.5K	DIP24	CE
AM3T-LPZ	4.5 - 9, 9-18, 18-36, 36-75	3, 5, 12, 15, 24	±5, ±9, ±12, ±15	1.5K	DIP24	CE
AM3TW-LPZ	9-36, 18-57	3, 5, 9, 12, 15, 24	±5, ±12, ±15	1.5K	DIP24	CE
AM3T-RZ	9-18, 18-36, 36-72	3.3, 5, 7.2, 9, 12, 15, 18, 24	±3.3, ±5, ±7.2, ±9, ±12, ±15, ±18, ±24	1.5K	DIP24	CE, UL
AM3TI-RZ	9-18, 18-36, 36-75	3.3, 5, 12, 15, 24	±3.3, ±5, ±12, ±15, ±24	1.5K, 3K	DIP24	CE, UL
AM3TW-Z	9-36, 18-72	3.3, 5, 7.2, 9, 12, 15, 18, 24	±3.3, ±5, ±7.2, ±9, ±12, ±15, ±18, ±24	1.5K, 3.5K	DIP24	CE
AM3TW-EZ	4.5-18, 9-36, 18-75	3.3, 5, 9, 12, 15, 24	±5, ±9, ±12, ±15	1.5k, 3k	DIL24	CE
AM3TW-RZ	9-36, 18-72	3.3, 5, 7.2, 9, 12, 15, 18, 24	±3.3, ±5, ±7.2, ±9, ±12, ±15, ±18, ±24	1.5K	DIP24	CE
AM3TIW-RZ	9-36, 18-75	3.3, 5, 12, 15, 24	±3.3, ±5, ±12, ±15, ±24	1.5K, 3K	DIP24	CE, UL
AM3PW-Z	4.5-18, 18-75	3.3, 5, 12, 15	±5, ±12, ±15	1.6K	DIP8	CE
AM3S-Z	5, 12, 24	5, 9, 12, 15	-	3K	SIP4	CE
AM3LV-EZ	4.5-9, 9-18, 18-36, 36-75	3.3, 5, 12, 15	±5, ±12, ±15	1.5k	SMD	CE



AM3A-Z SIP6



AM3G-LPZ SIP8



AM3GU-LPZ SIP8



AM3T-LPZ DIP24



AM3N-Z DIP24



AM3LV-EZ SMD



Smart Meter Application



Elevator Controls Application

4 Watt

SERIES	INPUT (VDC)	SINGLE OUTPUT (VDC)	DUAL OUTPUT (VDC)	ISOLATION (VDC)	CASE	SAFETY
AM4T-Z	4.5-9, 9-18, 18-36, 36-72	3.3, 5, 7.2, 9, 12, 15, 18, 24	±3.3, ±5, ±7.2, ±9, ±12, ±15, ±18, ±24	1.5K, 3.5K	DIP24	CE, UL
AM4TW-RZ	9-36, 18-72	3.3, 5, 7.2, 9, 12, 15, 18, 24	±3.3, ±5, ±7.2, ±9, ±12, ±15, ±18, ±24	1.5K	DIP24	CE



AM4TW-RZ DIP24

5 Watt

AM5T-Z	4.5-9, 9-18, 18-36, 36-72	3.3, 5, 7.2, 9, 12, 15, 18, 24	±3.3, ±5, ±7.2, ±9, ±12, ±15, ±18, ±24	1.5K, 3.5K	DIP24	CE, UL
AM5TW-Z	9-36, 18-72	3.3, 5, 7.2, 9, 12, 15, 18, 24	±3.3, ±5, ±7.2, ±9, ±12, ±15, ±18, ±24	1.5K, 3.5K	DIP24	CE
AM5TW-RZ	9-36, 18-72	3.3, 5, 7.2, 9, 12, 15, 18, 24	±3.3, ±5, ±7.2, ±9, ±12, ±15, ±18, ±24	1.5K	DIP24	CE



AM5TW-Z DIP24

6 Watt

AM6CW-LPZ	9-36, 18-75, 40-160	3.3, 5, 9, 12, 15, 24	±5, ±12, ±15, ±24	1.5K, 2.25K	1 x 1"	CE
AM6CW-EZ	9-36, 18-75	3.3, 5, 9, 12, 15, 24	±5, ±12, ±15, ±24	1.5K, 3k	1 x 1"	CE
AM6G-Z	4.5-9, 9-18, 18-36, 36-75	3.3, 5, 9, 12, 15, 24	±5, ±12, ±15	1.5K, 3K	SIP8	CE, UL
AM6G-LPZ	4.5-9, 9-18, 18-36, 36-75	3.3, 5, 12, 15, 24	±5, ±12, ±15, ±24	1.5K	SIP8	CE
AM6GH-Z	9-36, 18-75	3.3, 5, 9, 12, 15, 24	±5, ±12, ±15	1.5K, 3K	SIP8	CE, UL
AM6GH-LPZ	9-36, 18-75	3.3, 5, 9, 12, 15, 24	±5, ±9, ±12, ±15, ±24	1.5K	SIP8	CE
AM6T-Z	4.5-9, 9-18, 18-36, 36-72	3.3, 5, 7.2, 9, 12, 15, 18, 24	±3.3, ±5, ±7.2, ±9, ±12, ±15, ±18, ±24	1.5K, 3.5K	DIP24	CE, UL
AM6TI-Z	9-18, 18-36, 36-75	3.3, 5, 12, 15, 24	±3.3, ±5, ±12, ±15, ±24	1.5K, 3K	DIP24	CE, UL
AM6T-EZ	4.5-9	3.3, 5, 9, 12, 15, 24	±5, ±12, ±15	1.5K, 3k	DIP24	CE
AM6TW-Z	9-36, 18-72	3.3, 5, 7.2, 9, 12, 15, 18, 24	±3.3, ±5, ±7.2, ±9, ±12, ±15, ±18, ±24	1.5K, 3.5K	DIP24	CE
AM6LOW-LPZ	6-42	5, 12, 15, 24		3k	SMD	CE
AM6T-LPZ	4.5 - 9, 9-18, 18-36, 36-75	3, 5, 12, 15, 24	±5, ±12, ±15, ±24	1.5K	DIP24	CE
AM6TW-RZ	9-36, 18-72	3.3, 5, 7.2, 9, 12, 15, 18, 24	±3.3, ±5, ±7.2, ±9, ±12, ±15, ±18, ±24	1.5K	DIP24	CE
AM6TW-NZ	9-36, 18-75	3.3, 5, 6, 9, 12, 15, 24	±5, ±12, ±15, ±24	1.5k, 3k, 6k	DIL24	CE
AM6TIW-RZ	9-36, 18-75	3.3, 5, 12, 15, 24	±3.3, ±5, ±12, ±15, ±24	1.5K, 3K	DIP24	CE, UL
AM6TW-LPZ	9-36, 18-75	3.3, 5, 6, 9, 12, 15, 18, 24	±5, ±9, ±12, ±15, ±24	1.5K, 3K, 6K	DIP24	CE
AM6G-LPZ	4.5-9, 9-18, 18-36, 36-75	3.3, 5, 12, 15, 24	±5, ±12, ±15, ±24	1.5K	SIP8	CE, UL
AM6C-LPZ	9-18, 18-36, 36-75	3.3, 5, 12, 15, 24	±5, ±12, ±15	1.5k	1x1"	CE



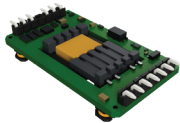
AM6G-Z SIP8



AM6CW-EZ



AM6TW-LPZ



AM6LOW-LPZ SMD

8 Watt

SERIES	INPUT (VDC)	SINGLE OUTPUT (VDC)	DUAL OUTPUT (VDC)	ISOLATION (VDC)	CASE	SAFETY
AM8T-Z	9-18, 18-36, 36-72	3.3, 5, 7.2, 9, 12, 15	$\pm 5, \pm 7.2, \pm 9, \pm 12, \pm 15$	1.5K	DIP24	CE, UL
AM8TW-Z	9-36, 13-70, 18-75, 42-176	3.3, 5, 12, 15	$\pm 5, \pm 12, \pm 15$	1.6K, 3K	DIP24	CE



AM8TW-Z DIP24

9 Watt

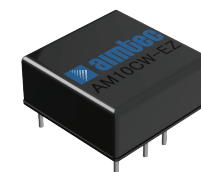
AM9GH-Z	9-36, 18-75	3.3, 5, 9, 12, 15, 24	$\pm 5, \pm 12, \pm 15$	1.6K	SIP8	CE
AM9G-Z	9-18, 18-36, 36-75	3.3, 5, 9, 12, 15, 24	$\pm 5, \pm 12, \pm 15$	1.6K	SIP8	CE



AM10C-LPZ

10 Watt

AM10C-LPZ	9-18, 18-36, 36-75	3.3, 5, 12, 15, 24	$\pm 5, \pm 12, \pm 15$	1.5k	1x1"	CE
AM10CW-EZ	9-36, 18-75	3.3, 5, 9, 12, 15	$\pm 12, \pm 15$	1.5K	1 x 1"	CE
AM10CW-LPZ	9-36, 18-75	3.3, 5, 9, 12, 15, 24	$\pm 5, \pm 9, \pm 12, \pm 15, \pm 24$	1.5K	1 x 1"	CE
AM10T-Z	9-18, 18-36, 36-75	2.5, 3.3, 5, 12, 15	$\pm 12, \pm 15$	1.5k	DIP24	CE, UL
AM10TW-Z	9-36, 18-75	3.3, 5, 12, 15	$\pm 5, \pm 12, \pm 15$	1.6K	DIP24	CE, UL
AM10TW-LPZ	9-36, 18-75	3.3, 5, 12, 15, 24	$\pm 5, \pm 12, \pm 15$	1.5K	DIP24	CE
AM10E-Z	9-18, 18-36, 36-72	3.3, 5, 7.2, 9, 12, 15, 18, 24	$\pm 3.3, \pm 5, \pm 7.2, \pm 9, \pm 12, \pm 15, \pm 18, \pm 24$	1.5K	2 X 1"	CE, UL
AM10GH-LPZ	9-36	3.3, 5, 6, 9, 10, 12, 15, 24	± 15	1.5K	SIP8	CE
AM10GH-EZ	9-36, 18-72	3.3, 5, 12, 15, 24	$\pm 5, \pm 12, \pm 15$	1.6K	SIP8	CE
AM10TWM-YZ	9-36, 18-75	3.3, 5, 12, 15	$\pm 5, \pm 12, \pm 15$	5KVAC	DIP24	CE



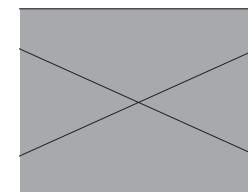
AM10CW-EZ



AM12T-Z DIP24

12 Watt

AM12T-Z	9-18, 18-36, 36-75	2.5, 3.3, 5, 12, 15	$\pm 12, \pm 15$	1.6K	DIP24	CE
AM12TW-Z	9-36, 18-75	3.3, 5, 12, 15	$\pm 5, \pm 12, \pm 15$	1.6K	DIP24	CE, UL



AM10G-LPZ



15 Watt

SERIES	INPUT (VDC)	SINGLE OUTPUT (VDC)	DUAL OUTPUT (VDC)	DUAL SEPA-RATED OUTPUT (VDC)	ISOLA-TION (VDC)	CASE	SAFE-TY
AM15C-Z	9-18, 18-36, 36-75	3.3, 5, 12, 15	±5, ±12, ±15	--	1.6K	1 X 1"	CE, UL
AM15C-LPZ	9-18, 18-36, 36-75	3.3, 5, 12, 15, 24	±5, ±12, ±15	--	1.5K	1 X 1"	CE
AM15CW-Z	9-36, 18-75	3.3, 5, 12, 15	±5, ±12, ±15	--	1.6K	1 X 1"	CE, UL
AM15CW-LPZ	9-36, 18-75	3.3, 5, 12, 15, 18, 24	±5, ±12, ±15, ±24	--	1.5K	1 X 1"	CE
AM15CW-TT	9-36, 18-75	3.3, 5, 12, 15, 24	±12, ±15	--	1.6K	1 X 1"	CE
AM15E-Z	9-18, 18-36, 36-72	3.3, 5, 7.2, 9, 12, 15, 18, 24	±3.3, ±5, ±7.2, ±9, ±12, ±15, ±18, ±24	--	1.5K	2 X 1"	CE, UL
AM15E-LPZ	18-36, 36-72	3.3, 5, 12, 15, 24	--	--	1.5K	2 X 1"	CE
AM15EW-Z	9-36, 18-72	3.3, 5, 12, 15	±5, ±12, ±15	--	1.5K, 3K	2 X 1"	CE, UL
AM15EW-LPZ	9-36, 18-75	3.3, 5, 12, 15, 24	--	--	1.5k	2 X 1"	CE
AM15JW-Z	9-36, 18-75	3.3, 5, 12, 15	±5, ±12, ±15	--	3k	1.6 X 1"	CE
AM15T-Z	9-18, 18-36, 36-75	3.3, 5.1, 12, 15	±5, ±12, ±15	--	1.6K	DIP24	CE
AM15TW-Z	9-36, 18-75	3.3, 5.1, 12, 15	±5, ±12, ±15	--	1.6K	DIP24	CE
AM15W-LPZ	100-1000	12, 15, 24	--	--	4000VAC	2.76 x 1.89"	CE



AM15TW-Z DIP24



AM20CWR-ZK

20-25 Watt

AM20C-Z	9-18, 18-36, 36-75	3.3, 5, 12, 15	±12, ±15	--	1.6K	1 X 1"	CE, UL
AM20C-LPZ	9-18, 18-36, 36-75	3.3, 5, 12, 15	±5, ±12, ±15, ±24	--	1.5K	1 X 1"	CE
AM20CW-Z	9-36, 18-75	3.3, 5, 12, 15	±12, ±15	--	1.6K	1 X 1"	CE, UL
AM20CW-EZ	9-36, 18-75	3.3, 5, 12, 15	±12, ±15	--	1.5K	1 X 1"	CE
AM20CW-LPZ	9-36, 18-75	3.3, 5, 6, 12, 15, 24	±5, ±12, ±15, ±24	--	1.5K	1 X 1"	CE
AM20E-Z	9-18, 18-36, 36-75	3.3, 5, 12, 15	±12, ±15	--	1.6K	2 X 1"	CE
AM20E-LPZ	18-36, 36-75	3.3, 5, 12, 15	±5, ±9, ±12, ±15, ±24	--	1.5K	2 X 1"	CE
AM20EW-Z	9-36, 18-75	3.3, 5, 12, 15	±5, ±12, ±15	--	1.6K	2 X 1"	CE
AM20EW-LPZ	9-36, 18-75, 40-160	3.3, 5, 9, 12, 15, 24	±5, ±9, ±12, ±15	--	1.5, 2.25k	2 X 1"	CE
AM20JW-Z	9-36, 18-75	3.3, 5, 12, 15	±5, ±12, ±15	--	3K	1.6 X 1"	CE
AM20CWR-ZK	13-70/42-176	3.3, 5, 12, 15	±5, ±12, ±15	--	3K	1 X 1"	CE
AM25EUW-ZK	16-160	5, 12, 15, 24	--	--	3K	2 X 1"	CE



AM20CW-LPZ



AM20EW-LPZ

30 Watt

AM30C-Z	9-18, 18-36, 36-75	3.3, 5, 12, 15	±12, ±15	--	1.6K	1 X 1"	CE, UL
AM30CW-Z	9-36, 18-75	3.3, 5, 12, 15	±12, ±15	--	1.6K	1 X 1"	CE, UL
AM30E-Z	9-18, 18-36, 36-75	3.3, 5, 5.1, 12, 15	±5, ±12, ±15	--	1.6K	2 X 1"	CE
AM30E-LPZ	18-36, 36-75	3.3, 5, 9, 12, 15, 24	±12, ±15	--	1.5K	2 X 1"	CE
AM30CW-EZ	9-36, 18-75	3.3, 5, 12, 15, 24	--	--	1.5K	1 X 1"	CE
AM30CW-LPZ	9-36, 18-75	3.3, 5, 12, 15, 24	--	--	1.5K	1 X 1"	CE
AM30EW-Z	9-36, 18-75	3.3, 5, 5.1, 12, 15	±5, ±12, ±15	3.3/±12, 3.3/±15, 5/±12, 5/±15	1.6K	2 X 1"	CE
AM30EW-EZ	9-36, 18-75	3.3, 5, 9, 12, 15	±12, ±15	--	1.6K	2 X 1"	CE
AM30EW-LPZ	9-36, 18-75	3.3, 5, 12, 15	±5, ±12, ±15, ±24	--	1.5K	2 X 1"	CE
AM30K-Z	9-18, 18-36, 36-75	3.3, 5, 12, 15	±12, ±15	--	1.5K	2 X 1.6"	CE



AM30CW-LPZ

40 Watt

SERIES	INPUT (VDC)	SINGLE OUTPUT (VDC)	DUAL OUTPUT (VDC)	ISOLATION (VDC)	CASE	SAFETY
AM40E-Z	9-18, 18-36, 36-75	3.3, 5, 12, 15	±12, ±15	1.6K	2 X 1"	CE
AM40E-LPZ	9-18, 18-36, 36-75	3.3, 5, 12, 15, 24	--	1.5K	2 X 1"	CE
AM40EW-LPZ	9-36, 18-75, 40-160	5, 9, 12, 15, 24	±12, ±15, ±24	1.5, 3k	2 X 1"	CE
AM40UW-Z	9-36, 18-75	3.3, 5, 12, 15	±12, ±15	1.6K	2 X 2"	CE
AM40CW-LPZ	9-36, 18-75	3.3, 5, 12, 15, 24	--	1.5k	1 X 1"	CE
AM40QB-TT	14-160	5, 12, 24, 48, 54	--	3k	QB	CE

50 Watt

AM50E-Z	9-18, 18-36, 36-75	3.3, 5, 12, 15	--	1.6K	2 X 1"	CE, UL
AM50EW-LPZ	9-36, 18-75	5, 12, 15, 24	--	1.5K	2 X 1"	CE
AM50W-LPZ	200-1200	12, 15, 24, 36, 48	--	4k VAC	3.5 x 2.5"	CE
AM50QB-UU	12-160	3.3, 5, 12, 15, 24, 48	--	4K	QB	CE

60 Watt

AM60EW-Z	9-36, 18-75	5, 12, 15	±12, ±15	1.6K	2 X 1"	CE, UL
AM60EW-LPZ	9-36, 18-75	5, 6, 12, 15, 24, 28		1.5K	2 X 1"	CE
AM60U-Z	18-36, 36-75	3.3, 5, 12, 15	--	1.6K	2 X 2"	CE
AM60QB-TT	14-160	5, 12, 24, 48, 54	--	3k	QB	CE

150 Watt

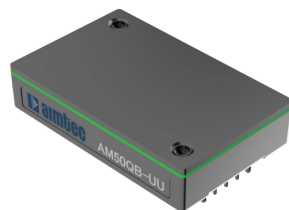
AM150QB-TT	9-75, 60-160	5, 12, 15, 24, 48, 54	--	2.25, 3k	QB	CE
AM150HB-TT	9-75	12, 24, 28, 48, 54	--	3k	HB	CE
AM150W-LPZ	250-1500	12, 15, 24, 28, 32, 48	--	4k VAC	6.61 x 4.38"	CE

300 Watt

AM300HB-TT	9-36	12, 15, 24, 48	--	3k	HB	CE
------------	------	----------------	----	----	----	----



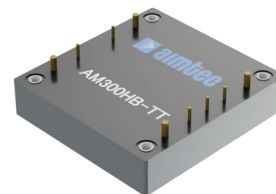
AM50W-LPZ



AM50QB-UU



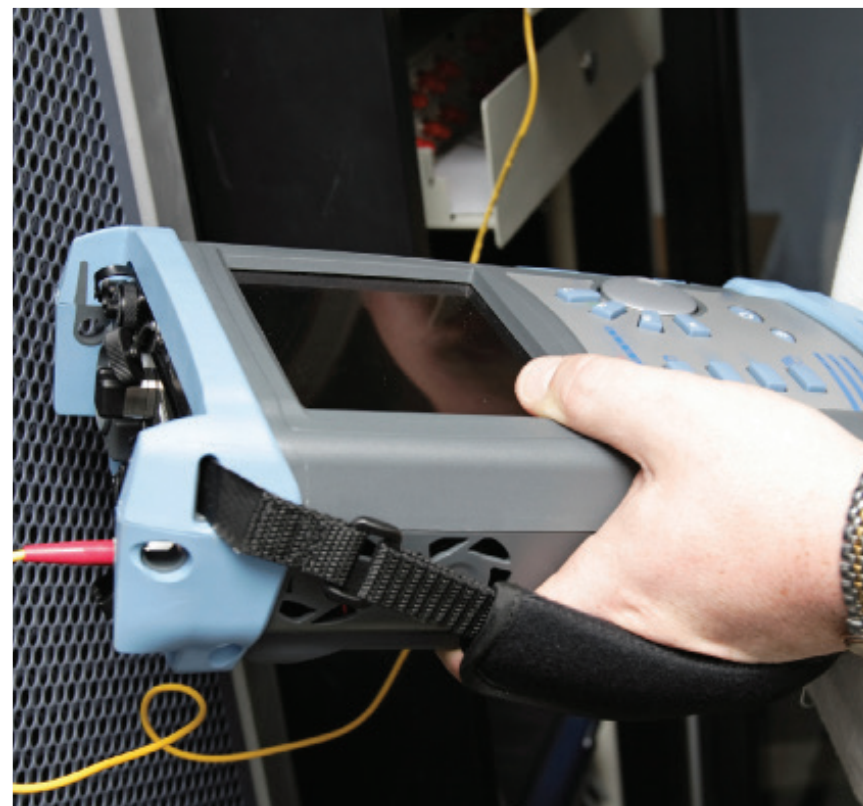
AM150W-LPZ



AM300HB-TT



Switching Regulators (non-isolat-



SWITCHING REGULATORS ARE REPLACING LINEAR REGULATORS

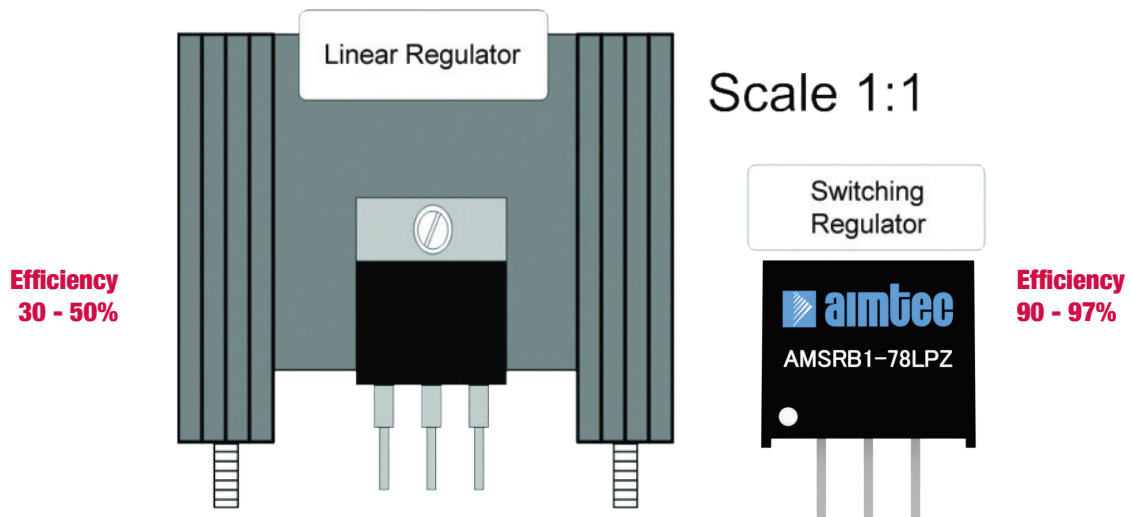
High Efficiency: up to 97% versus 50% for linear regulators

NO heat sink required: Saves PCB real-estate

NO forced air cooling required: Eliminates need for heat sink

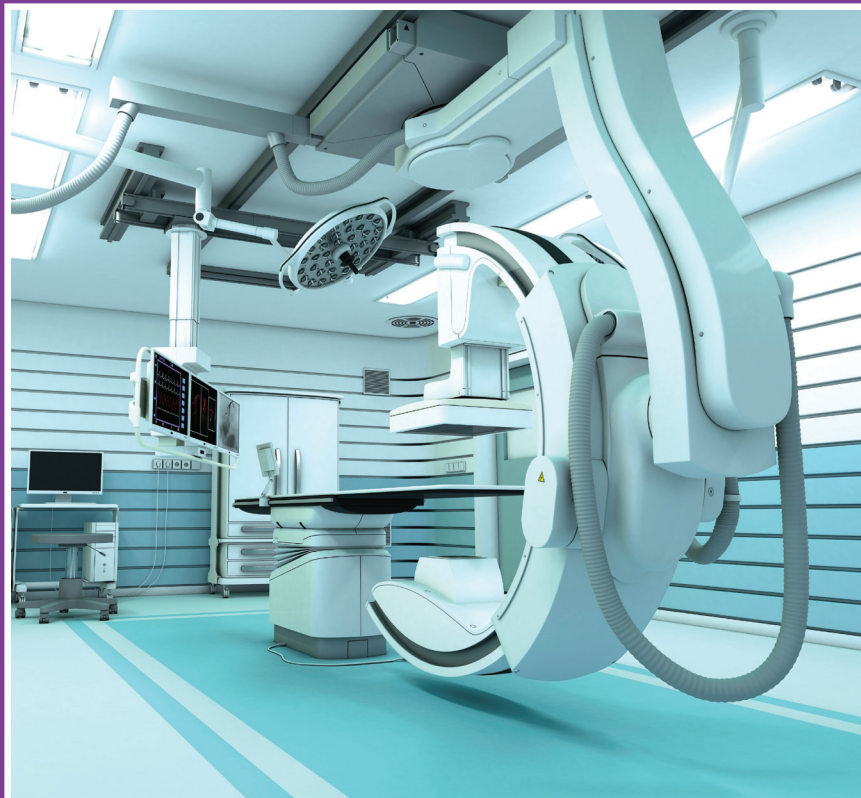
0.75 to 35 Watt Non-Isolated Switching Regulator

POWER (W)	SERIES	INPUT (VDC)	SINGLE OUTPUT (VDC)	OUTPUT CURRENT MAX (A)	CASE	SAFETY
1.65 ~ 7.5	AMSRI-78-EZ	4.75-36	-15, -12, -5, 3.3, 5, 9, 12, 15	0.5	SIP3	CE, UL
0.75 ~ 7.5	AMSR-78-Z	4.75-34	1.5, 1.8, 2.5, 3.3, 5, 6.5, 7.2, 9, 12, 15	0.5	SIP3	CE
1.65 ~ 7.5	AMSR-78LPZ	4.75-36	-15, -12, -5, 3.3, 5, 9, 12, 15	0.5	SIP3	CE
1.65 ~ 7.5	AMSRB-78-Z	4.5-28	3.3, 5, 12, 15	0.5	SIP3	CE
5	AMSRB1-78Z	7-28	3.3, 5	1	SIP3	CE
5	AMSRB1-78LPZ	6-36	-15, -12, -5, 3.3, 5, 6.5, 9, 12, 15	1	SIP3	CE
1.65 ~ 7.5	AMSRW-78Z	9 ~ 72	3.3, 5, 6.5, 7.2, 9, 12, 15	0.5	SIP3	CE
1.5 ~ 5	AMSR1-78Z	4.75 ~ 18	1.5, 1.8, 2.5, 3.3, 5	1	SIP3	CE
3.3~15	AMSR1-78LPZ	6~36	-15, -12, -5, 3.3, 5, 6.5, 9, 12, 15	1	SIP3	CE
1.2 ~ 15	AMSRL-Z	9~72	3.3,5,6.5,7.2,9,12, 15	0.5	SMD	CE
1.2 ~ 15	AMSRL1-Z	3 ~ 36	1.2, 1.5, 1.8, 2.5, 3.3, 5, 6.5, 9, 12, 15	1	SMD	CE
3.6 ~ 30	AMSR2-78LPZ	4.5-28	1.8, 2.5, 3.3, 5, 6.5, 9,12,15	2	SIP3	CE
3.6 ~ 30	AMSR2-78EZ	4.75-36, 18-36	1.8, 2.5, 3.3, 5, 6.5, 9,12,15	2	SIP3	CE
1.1 ~ 7.5	AMSR0L-78EZ	4.75~36, 19 ~ 36	3.3, 5, 6.5, 9, 12, 15	0.5	SMD	CE
5	AMSR0L1-TT	3-14	5	1	SMD	CE
1.1 ~ 7.5	AMSRU-78EZ	9-90, 36-90	3.3, 5, 6.5, 9, 12, 15	0.5	SMD	CE
9.9 ~ 35	AMSR3-EZ	8-36, 19-36	3.3, 5, 6.5, 9, 12, 15	3	SIP12	CE





AC/DC Converters (isolated)



Aimtec expands its AC/DC converter line by offering power up to 1000W.



Wide operating temperatures: -40 °C to 85 °C

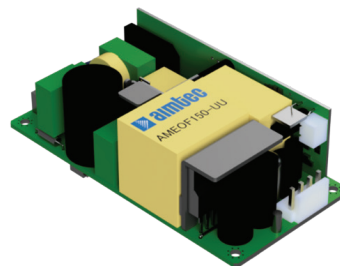
High power density: small footprints with open frame and encapsulated package options

Low EMI: suitable for very sensitive telecom applications

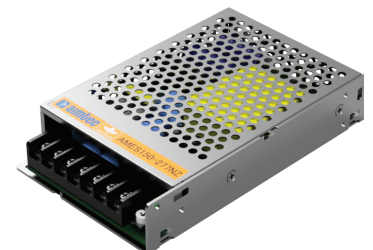
High I/O Isolation: up to 4870VAC



AMEM3-277HAVZ



AMEOP150-UU



AMES150-NZ



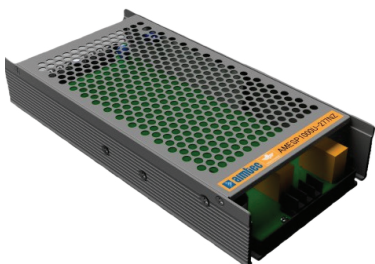
AIMTEC EAGLE SERIES



AMESP320-277NZ



AMESP75-277NZ



AMESP1000U-277NZ

SERIES	POWER (W)	SINGLE OUTPUT (VDC)	ISOLATION (VAC)	CASE (MM)	OPERATING TEMPERATURE (°C)	SAFETY
90-264VAC Input						
AMES15-NZ	15	5, 12, 24, 48	3000	62.5 x 51 x 28	-30 to +70	CE
AMES35-NZ	35	5, 12, 15, 24	4000	99 x 82 x 30	-30 to +70	CE, UL
AMES50-NZ	50	5, 12, 15, 24, 36, 48	4000	99 x 82 x 30	-30 to +70	CE, UL
AMES60-GY	60	13.8, 27.6	3000	103 x 62 x 37	-20 to +70	CE
AMES75-NZ	75	5, 12, 15, 24, 36, 48	4000	99 x 97 x 30	-30 to +70	CE, UL
AMES100-NZ	100	5, 12, 15, 24, 36, 48	4000	99 x 97 x 30	-30 to +70	CE, UL
AMES150-NZ	100	5, 12, 15, 24, 36, 48	4000	159 x 97 x 30	-30 to +70	CE, UL
AMES200-NZ	200	5, 12, 15, 24, 36, 48	4000	179 x 99 x 30	-30 to +70	CE, UL
AMES350-NZ	350	12, 15, 24, 36, 48	4000	215 x 115 x 30	-30 to +70	CE, UL
AMES450-NZ	450	12, 15, 24, 36, 48, 60	3750	215 x 115 x 30	-25 to +50	CE, UL
AMES600-NZ	600	12, 15, 24, 27, 36, 48	3750	225 x 124 x 30	-25 to +50	CE
Power Factor Correction						
AMESP75-277NZ	75	5, 12, 15, 24, 48	4000	159 x 97 x 30	-25 to +70	CE, UL
AMESP100-277NZ	100	5, 12, 15, 24, 48	4000	179 x 99 x 30	-30 to +70	CE
AMESP150-277NZ	150	5, 7.5, 12, 15, 24, 27, 48	4000	179 x 99 x 30	-30 to +70	CE
AMESP200-277NZ	200	5, 12, 15, 24, 48	4000	215 x 115 x 30	-30 to +70	CE, UL
AMESP320-277NZ	320	5, 12, 15, 24, 48	3000	215 x 115 x 30	-30 to +70	CE
AMESP500-277NZ	500	5, 12, 15, 24, 36, 48	3000	230 x 127 x 30	-30 to +70	CE
AMESP600-277NZ	600	12, 15, 24, 36, 48, 60	3000	230 x 127 x 40.5	-30 to +70	CE
Fanless						
AMESP200U-277NZ	200	3.3, 4.2, 5, 12, 15, 24, 36, 48, 55	3750	195 x 55 x 26	-30 to +70	CE
AMESP350U-277NZ	350	5, 12, 15, 24, 36, 48	3750	220 x 62 x 31	-30 to +70	CE, UL
AMESP500U-277NZ	500	5, 12, 15, 24, 36, 48	3750	232 x 81 x 31	-30 to +70	CE
AMESP750U-277NZ	750	5, 12, 15, 24, 36, 48	3750	237 x 100 x 41	-30 to +70	CE
AMESP1000U-277NZ	1000	12, 24, 36, 48	3750	237 x 100 x 41	-30 to +70	CE

aimtec
MUST HAVZ



Compact AC/DC CONVERTERS!

20



AMEM5-277HAVZ



AMEL90-277HAVZ

SERIES	POWER (W)	SINGLE OUTPUT (VDC)	ISOLATION (VAC)	CASE	OPERATING TEMPERATURE (°C)	SAFETY
85-305VAC Input						
AMEM3-277HAVZ	3	3.3, 5, 9, 12, 15, 24	4000	1 X 1"	-40 to +85	CE, UL
AMEM5-277HAVZ	5	3.3, 5, 9, 12, 15, 24	4000	1 X 1"	-40 to +85	CE, UL
AMEL10-277HAVZ	10	3.3, 5, 9, 12, 15, 24	4000	1.58 x 1 x 0.83"	-40 to +85	CE, UL
AMEL10S-277HAVZ	10	3.3, 5, 9, 12, 15, 24	4000	1.58 x 1 x 0.83"	-40 to +85	CE
AMEL15-277HAVZ	15	3.3, 5, 9, 12, 15, 24	4000	1.87 x 1.06 x 0.92"	-40 to +85	CE, UL
AMEL15S-277HAVZ	15	3.3, 5, 9, 12, 15, 24	4000	1.87 x 1.06 x 0.92"	-40 to +85	CE
AMEL20-277HAVZ	20	3.3, 5, 9, 12, 15, 24	4000	2.06 x 1.07 x 0.94"	-40 to +85	CE, UL
AMEL30-277HAVZ	30	3.3, 5, 9, 12, 15, 24, 48	4200	2.06 x 1.07 x 0.94"	-40 to +85	CE, UL
AMEL40-277HAVZ	40	5, 12, 15, 24, 48	4200	2.74 x 1.54 x 0.95"	-40 to +85	CE, UL
AMEL60-277HAVZ	60	5, 12, 15, 24, 48	4200	2.76 x 1.88 x 1.06"	-40 to +85	CE, UL
AMEL90-277HAVZ	90	12, 15, 24, 48	4200	3.43 x 2.05 x 1.16"	-40 to +85	CE



Industrial



IoT



Appliances



AMEL40-277HAVZ

**Meets IEC/EN/UL62368
IEC/EN60335
IEC/EN61558**

aimtec
DIN Rail



DIN Rail AC/DC CONVERTERS

21

AC/DC
CONVERTERS



AMED15-GY



AMED240W-GY

SERIES	POWER (W)	SINGLE OUTPUT (VDC)	ISOLATION (VAC)	CASE (MM)	OPERATING TEMPERATURE (°C)	SAFETY
Encapsulated, Chassis Mount						
AMED10-GY	10	5, 12, 15, 24	3000	23 x 100 x 92	-20 to +70	CE, UL
AMED15-GY	15	5, 12, 15, 24, 48	3000	18 x 90 x 58	-20 to +70	CE, UL
AMED20-GY	20	5, 12, 15, 24	3000	23 x 100 x 92	-20 to +70	CE, UL
AMED30-GY	30	5, 12, 15, 24, 48	3000	35 x 90 x 58	-20 to +70	CE, UL
AMED40-GY	40	5, 12, 24, 48	3000	41 x 100 x 92	-20 to +70	CE, UL
AMED60-GY	60	5, 12, 24, 48	3000	41 x 100 x 92	-20 to +70	CE, UL
AMED60S-GY	60	5, 12, 15, 24, 48	3000	52 x 90 x 58	-20 to +70	CE, UL
AMED60W-GY	60	5, 12, 24, 48	4700	32 x 100.5 x 125	-30 to +85	CE, UL
AMED75N-GY	75	12, 24, 48	3000	32 x 100.5 x 125	-20 to +70	CE, UL
AMED100-GY	100	12, 15, 24, 48	3000	90 x 70.2 x 58.4	-20 to +70	CE, UL
AMED100S-GY	100	12, 24, 48	3000	55 x 100 x 92	-10 to +60	CE, UL
AMED120-GY	120	12, 24, 48	3000	40 x 125.2 x 113.5	-25 to +70	CE, UL
AMED120W-GY	120	12, 24, 48	3000	40 x 113 x 125	-25 to +70	CE, UL
AMED150N-GY	150	12, 24, 48	3000	40 x 125.2 x 113.5	-20 to +70	CE, UL
AMED150-GY	150	12, 15, 24, 48	3000	105 x 70.2 x 58.4	-20 to +70	CE
AMED240-GY	240	24, 48	3000	63 x 125 x 113.5	-25 to +70	CE, UL
AMED240T-GY	240	24, 48	4870	63 x 113 x 125	-30 to +70	CE, UL
AMED240W-GY	240	24, 48	3000	63 x 113.5 x 125	-30 to +70	CE, UL
AMED240N-GY	240	24, 48	3000	63 x 113.5 x 125	-20 to +70	CE, UL
AMED240B-GY	240	12, 15, 24, 48	3000	131, 40, 124	-30 to +70	CE
AMED480-GY	480	24, 48	3000	85.5 x 129 x 125	-25 to +70	CE, UL
AMED480N-GY	480	24, 48	3000	85.5 x 129 x 125	-25 to +70	CE, UL
AMED480T-GY	480	24, 48	4870	85.5 x 129 x 125	-30 to +70	CE, UL
AMED480W-GY	480	24, 48	3000	85.5 x 129 x 125	-30 to +70	CE, UL
AMEDP960-GY	960	24, 48	3000	124.7 x 110 x 150	-30 to +70	CE, UL

Ease of Installation, No Soldering Required!



85-264VAC Input Voltage

SERIES	POWER (W)	SINGLE OUTPUT (VDC)	ISOLATION (VAC)	CASE (MM)	OPERATING TEMPERATURE (°C)	SAFETY
Open Frame, PCB Mount						
AMEOF5-EZ	5	3.3, 5, 9, 12, 15, 24	3000	42 x 20 x 13.65	-40 to +85	CE
AMEOF24-UU	24	3.3, 5, 9, 12, 15, 18, 24, 48	3000	75 x 48 x 26.6	0 to +70	CE
AMEOF60-TZ	60	12, 24, 48	3000	50.8 x 101.6 x 27.9	-20 to +70	CE
AMEOF150-UU	150	12, 15, 24, 48, 53	3000	102 x 51 x 36	0 to +70	CE
AMEOFP250-TZ	250	12, 24, 48, 55	3000	127 x 76.2 x 33.4	-25 to +70	CE
Encapsulated, PCB Mount						
AMEM1-EZ	1	3.3, 5, 9, 12, 15, 24, 48	3000	25.4 x 25.4 x 16.1	-25 to +70	CE, UL
AMEM3-EZ	3	3.3, 5, 9, 12, 15, 24, 48	3000	25.4 x 25.4 x 16.1	-25 to +70	CE, UL
AMEM5-EZ	5	3.3, 5, 9, 12, 15, 24, 48	3000	25.4 x 25.4 x 16.1	-25 to +70	CE, UL
AMEM5-Y	5	3.3, 5, 9, 12, 15, 24, 36, 48	4000	25.4 x 25.4 x 15.2	-25 to +70	CE, UL
AMEL10-MEZ	10	5, 12, 15, 24	4000	50.8 x 25.4 x 17	-25 to +85	CE, UL

AIMTEC DIN Rails



aimtec
Your Power Partner

Power Range | 10-960W



Features

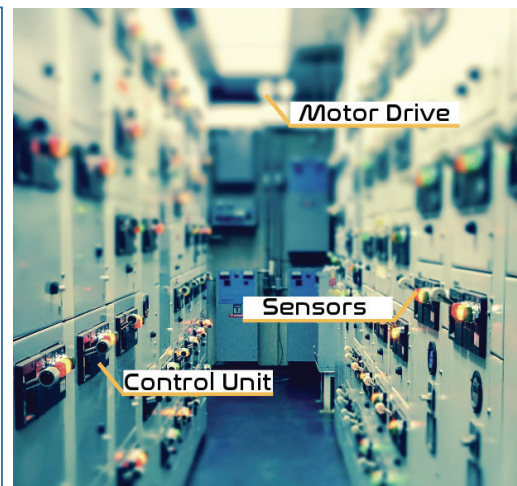
- Wide temperature range: up to -30 to +85°C
- CE & UL available
- Wide input voltage range: 90 - 264VAC, 180-550VAC, 340-550VAC
- Easy plug and play
- 3 year warranty
- Output up to 48V
- High isolation up to 4870VAC
- 12-week lead time

Applications



Series

- AMED10-GY
- AMED15-GY
- AMED30-GY
- AMED60-GY
- AMED75N-GY
- AMED100-GY
- AMED120W-GY
- AMED240T-GY
- AMED240W-GY
- AMED480-GY
- AMED480T-GY
- AMED480W-GY
- AMEDP960W-GY



85-305VAC Input Voltage

SERIES	POWER (W)	SINGLE OUTPUT (VDC)	ISOLATION (VAC)	CASE (MM)	OPERATING TEMPERATURE (°C)	SAFETY
Open Frame, PCB Mount						
AMEOF1-277EZ	1	5, 9, 12, 15, 24	3000	35 x 18 x 11	-40 to +85	CE
AMEOF3-277EZ	3	3.3, 5, 9, 12, 15, 24	3000	35 x 18 x 11	-40 to +85	CE
AMEOFL3-277HALPZ	3	3.3, 5, 9, 12, 15, 24	3000	26.4 x 14.80 x 11	-40 to +85	CE
AMEOFL5-277HALPZ	5	3.3, 5, 9, 12, 15, 24	4000	26.40 x 14.8 x 11	-40 to +85	CE, UL
AMEOF5-277EZ	5	3.3, 5, 9, 12, 15, 24	3000	42 x 13.7 x 20	-20 to +70	CE
AMEOFL10-277HALPZ	10	3.3, 5, 9, 12, 15, 24	4000	32 x 14.5 x 20	-40 to +85	CE
AMEOFL15-277HALPZ	15	3.3, 5, 9, 12, 15, 24	4000	32 x 14.5 x 20	-40 to +85	CE
Encapsulated, PCB Mount						
AME1-AZ	1	3.3, 5, 12, 15, 24	3000	35.6 x 23.3 x 19.3	-40 to +80	CE, UL
AME2-AZ	2	3.3, 5, 12, 15, 24	3000	35.6 x 23.3 x 19.3	-40 to +70	CE, UL
AME3-AZ	3	3.3, 5, 12, 15, 24	3000	35.6 x 23.3 x 19.3	-40 to +80	CE, UL
AMEM3-277HAVZ	3	3.3, 5, 9, 12, 15, 24	4000	25.4 x 25.4 x 15	-40 to +85	CE, UL
AMEL5-AZ	5	3.3, 5, 12, 15, 24	3000	51.5 x 28.3 x 17.8	-40 to +95	CE, UL
AMEL5-277HALPZ	5	3.3, 5, 9, 12, 15, 24	4000	45.7 x 25.4 x 21.5	-40 to +85	CE, UL
AMEM5-277HAVZ	5	3.3, 5, 9, 12, 15, 24	4000	25.4 x 25.4 x 17.6	-40 to +85	CE, UL
AMEM5-277HAGY	5	3.3, 5, 9, 12, 15, 24	4000	25.4 x 25.4 x 17.6	-40 to +85	CE
AMEL10-AZ	10	3.3, 5, 12, 15, 24	3000	56.5 x 30.9 x 25.1	-40 to +80	CE, UL
AMEL10-277HALPZ	10	3.3, 5, 9, 12, 15, 24	4000	45.7 x 25.4 x 21.5	-40 to +85	CE, UL
AMEL10-277HAGY	10	3.3, 5, 12, 15, 24	4000	52.5 x 27.4 x 23	-30 to +70	CE, UL
AMEL10S-277HAGY	10	3.3, 5, 9, 12, 15, 24	4000	40 x 25.4 x 21	-40 to +85	CE, UL
AMEL10-277HAVZ	10	3.3, 5, 9, 12, 15, 24	4000	40 x 25.4 x 21	-40 to +85	CE, UL
AMEL10S-277HAVZ	10	3.3, 5, 9, 12, 15, 24	4000	40 x 25.4 x 21	-40 to +85	CE
AMEL15-277HALPZ	15	3.3, 5, 9, 12, 15, 24, 48	4000	52.4 x 27.2 x 24	-40 to +70	CE, UL
AMEL15-277HAVZ	15	3.3, 5, 9, 12, 15, 24	4000	47.6 x 26.8 x 23.5	-40 to +85	CE, UL
AMEL15S-277HAVZ	15	3.3, 5, 9, 12, 15, 24	4000	47.6 x 26.8 x 23.5	-40 to +85	CE
AMEL15S-277HAGY	15	3.3, 5, 9, 12, 15, 24	4000	47.4 x 26.8 x 23.5	-40 to +85	CE, UL
AMEL20-277HAGY	20	3.3, 5, 9, 12, 15, 24	4000	52.5 x 27.4 x 23	-30 to +70	CE, UL
AMEL20-277HAVZ	20	3.3, 5, 9, 12, 15, 24	4000	52.4 x 27.2 x 24	-40 to +85	CE, UL
AME25-277LPZ	25	3.3, 5, 9, 12, 15, 24, 48	4200	70 x 48 x 23.5	-40 to +85	CE
AMEL30-277HAVZ	30	3.3, 5, 9, 12, 15, 24, 48	4200	69.5 x 39 x 24	-40 to +85	CE, UL
AMEL30-277HAGY	30	5, 12, 15, 24, 48	3000	69.6 x 39 x 24.2	-30 to +85	CE, UL
AMEL40-277HAVZ	40	5, 12, 15, 24, 48	4200	69.5 x 39 x 24	-40 to +85	CE, UL
AMEL45-277HAGY	45	5, 12, 15, 24, 48	3000	87 x 52 x 30	-30 to +85	CE, UL
AMEL60-277HAVZ	60	5, 12, 15, 24, 48	4200	70 x 48 x 27	-40 to +85	CE, UL
AMEL60-277HAGY	60	5, 12, 15, 24, 48	3000	87 x 52 x 30	-30 to +85	CE, UL
AMEL90-277HAVZ	90	12, 15, 24, 48	4200	87 x 52 x 29.5	-40 to +85	CE
AMEL90-277HAGY	90	12, 15, 24, 48	4000	87 x 52 x 29.5	-30 to +85	CE, UL

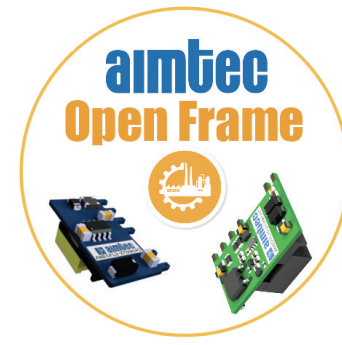
Up to 550VAC Input Voltage

SERIES	POWER (W)	INPUT VOLTAGE VAC	SINGLE OUTPUT (VDC)	ISOLATION (VAC)	CASE (MM)	OPERATING TEMPERATURE (°C)	SAFETY
Encapsulated, PCB Mount							
AME1-BAZ	1	90-528	3.3, 5, 12, 15, 24	3000	35.6 x 23.3 x 19.3	-40 to +80	CE, UL
AME30-480LPZ	30	176-528	5, 9, 12, 15, 24, 48	4000	70 x 48 x 27	-40 to +80	CE
Open Frame, PCB Mount							
AMEOFL5-480HALPZ	5	90-528	3.3, 5, 9, 12, 15, 24	4000	33.5 x 17.2 x 13	-40 to +85	CE
AMEOFL10-480HALPZ	10	85-528	3.3, 5, 9, 12, 15, 24	4000	38 x 20 x 15.2	-40 to +85	CE
Din Rail							
AMED60W-GY	60	180-550	5, 12, 24, 48	4700	32 x 100.5 x 125	-25 to +70	CE, UL
AMED120W-GY	120	180-550	12, 24, 48	3000	40 x 113 x 125	-25 to +70	CE, UL
AMED240T-GY	240	340-550	24, 48	4870	63 x 113 x 125	-30 to +70	CE, UL
AMED240W-GY	240	180-550	24, 48	3000	63 x 113.5 x 125	-30 to +70	CE, UL
AMED480T-GY	480	340-550	24, 48	4870	85.5 x 129 x 125	-30 to +70	CE, UL
AMED480W-GY	480	180-550	24, 48	3000	85.5 x 129 x 125	-30 to +70	CE, UL

Non-Isolated AC/DC Converters

SERIES	POWER (W)	INPUT VOLTAGE VAC	OUTPUT (VDC)	CASE (MM)	OPERATING TEMPERATURE (°C)	SAFETY
AMESR-277LPZ	1 to 5	85-305	5, 12, 15, 18	16.1 x 15.1 x 9.5	-40 to +85	CE

AC/DC Converter Families



AC/DC Converters for Medical Applications

SERIES	POWER (W)	SINGLE OUTPUT (VDC)	DUAL OUTPUT (VDC)	DUAL ASYMMETRICAL (VDC)	CASE (MM)	OPERATING TEMPERATURE (°C)	SAFETY
Encapsulated, Chassis Mount, 2 x MOOP, Input 90-264VAC, I/O Isolation 4000VAC							
AMEL5-MAZ	5	3.3, 5, 12, 15, 24	±5, ±12, ±15	--	51.5 x 28 x 17.8	-40 to +80	IEC\EN\UL 60601-1
AMEL10-MAZ	10	3.3, 5, 12, 15, 24	--	3.3/5, 3.3/12, 3.3/15, 3.3/24, 5/12, 5/15, 5/24, 12/15, 12/24, 15/24, -3.3/5, -3.3/12, -3.3/15, -5/5, -5/12, -5/15, -12/12, -12/15	56.5 x 30.9 x 25.1	-40 to +70	IEC\EN\UL 60601-1
AMEL10-MEZ	10	5, 12, 15, 24	--	--	50.8 x 25.4 x 17	-25 to 85	IEC/EN/UL60601-1
AME15-MAZ	15	3.3, 5, 12, 15, 24	±5, ±12, ±15	--	65 x 46.5 x 20.1	-40 to +85	IEC\EN\UL 60601-1
AMEL20-MAZ	20	3.3, 5, 12, 15, 24	--	3.3/5, 3.3/12, 3.3/15, 3.3/24, 5/12, 5/15, 5/24, 12/15, 12/24, 15/24, -3.3/5, -3.3/12, -3.3/15, -5/5, -5/12, -5/15, -12/12, -12/15	56.5 x 30.9 x 25.1	-40 to +70	IEC\EN\UL 60601-1
AME30-MAZ	30	3.3, 5, 12, 15, 24	±5, ±12, ±15, ±24	--	90.5 x 63 x 30	-40 to +85	IEC\EN\UL 60601-1
AME40-MAZ	40	3.3, 5, 12, 15, 24	±5, ±12, ±15, ±24	--	90.5 x 63 x 30	-40 to +85	IEC\EN\UL 60601-1
Encapsulated, Chassis Mount, 2 x MOOP, Input 90-264VAC, I/O Isolation 4000VAC							
AMEL5-MAZ-ST	5	3.3, 5, 12, 15, 24	±5, ±12, ±15	--	86 x 38 x 23.8	-40 to +80	IEC\EN\UL 60601-1
AMEL10-MAZ-ST	10	3.3, 5, 12, 15, 24	--	3.3/5, 3.3/12, 3.3/15, 3.3/24, 5/12, 5/15, 5/24, 12/15, 12/24, 15/24, -3.3/5, -3.3/12, -3.3/15, -5/5, -5/12, -5/15, -12/12, -12/15	86 x 38 x 31.1	-40 to +70	IEC\EN\UL 60601-1
AMEL20-MAZ-ST	20	3.3, 5, 12, 15, 24	--	3.3/5, 3.3/12, 3.3/15, 3.3/24, 5/12, 5/15, 5/24, 12/15, 12/24, 15/24, -3.3/5, -3.3/12, -3.3/15, -5/5, -5/12, -5/15, -12/12, -12/15	86 x 38 x 31.1	-40 to +70	IEC\EN\UL 60601-1





Adapters

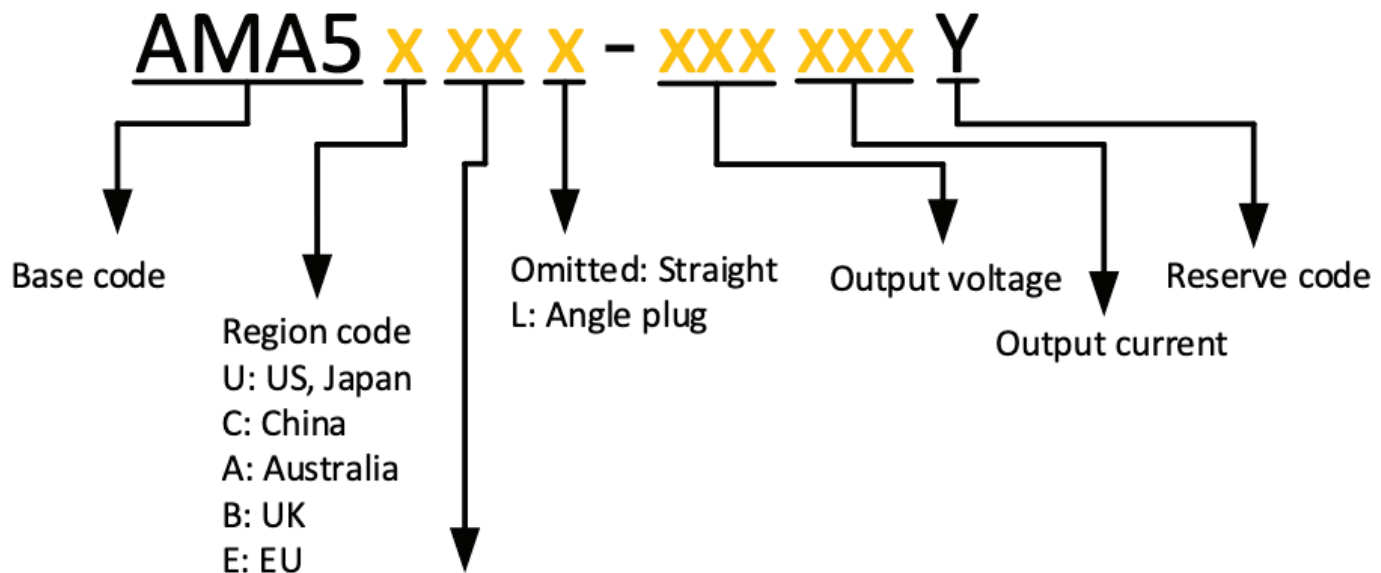


Customers will now benefit from a whole new product class expanding Aimtec's overall portfolio breadth.

Multiple Output plugs

Series	Code	Outer Diameter	Inner Diameter	Length
Standard	R1	3.5mm	1.35mm	9.5mm
	R2	3.8mm	1.05mm	9.5mm
	R3	3.8mm	1.35mm	9.5mm
	R4	5.5mm	2.1mm	9.5mm
	R5	5.5mm	2.5mm	9.5mm
Locking	K1	5.5mm	2.1mm	9.5mm
	K2	5.5mm	2.5mm	9.5mm
USB	U1	Micro USB		
	U2	USB type C		
	U3	Female USB type-A port embedded in the adapter body (no external wires)		
	U4	Mini USB		

Nomenclature



Adapters



Desktop



Wall Mount

Wall Mount Adapters

Series	Output Power (W)	Input Voltage (VAC)	Output Voltage (VDC)	Max Output Current (A)	Isolation (VAC)	Operating Temperature (°C)	Certifications
AMA5-Y	5	90-264	3.3, 5, 12	1.6	3000	0 to +40	EAC, UL, CE, EMC, FCC
AMA6U-LPZ	6	90-264	5, 9, 12, 15, 24	1.5	4242	-10 to +40	ETL, EMC, FCC
AMA6E-LPZ	6	90-264	5, 9, 12, 15, 24	1.5	4242	-10 to +40	ETL, EMC, FCC
AMA10-GY	10	90-264	5	2	3000	-20 to +60	ETL, EMC, FCC
AMA12-Y	12	90-264	5, 12	2	3000	0 to +40	EAC, UL, CE, EMC, FCC
AMA12U-LPZ	12	90-264	5, 6, 9, 12, 24	2.5	4242	-10 to +40	ETL, EMC, FCC
AMA12E-LPZ	12	90-264	5, 6, 9, 12, 24	2.5	4242	-10 to +40	ETL, EMC, FCC
AMA12X-GY	12	90-264	5, 9, 12, 15, 24, 36	2	3000	-20 to +60	UL, EMC, FCC
AMA12-MY	12	90-264	12	1	3000	0 to +40	CE
AMA18X-Y	18	90-264	12	1.5	3000	0 to +40	EAC, UL, CE, EMC, FCC
AMA18-LPZ	18	90-264	5, 7.5, 9, 12, 15, 24	3	4242	-10 to +40	ETL, EMC, FCC
AMA18-LPZ	18	90-264	5, 7.5, 9, 12, 15, 24	3	4242	-10 to +40	ETL, EMC, FCC
AMA24-Y	24	90-264	5, 12, 24	3	3000	0 to +40	EAC, UL, CE, EMC, FCC
AMA24U-LPZ	24	90-264	5, 9, 12, 24	4.8	4242	-10 to +40	ETL, EMC, FCC
AMA24E-LPZ	24	90-264	5, 9, 12, 24	4.8	4242	-10 to +40	ETL, EMC, FCC
AMA36-Y	36	90-264	12	3	3000	0 to +40	EAC, UL, CE, EMC, FCC
AMA36U-LPZ	36	90-264	9, 12, 15, 18, 24	4	4242	-10 to +40	ETL, EMC, FCC
AMA36E-LPZ	36	90-264	9, 12, 15, 18, 24	4	4242	-10 to +40	ETL, EMC, FCC
AMA40-Y	40	90-264	12	3.34	3000	0 to +40	EAC, UL, CE, EMC, FCC
AMA65-Y	65	90-264	12, 19, 24	5	3000	0 to +40	EAC, UL, CE, EMC, FCC

Output Plug Types



Locking



Right Angle



Micro USB



USB Type C

Desktop Adapters

Series	Output Power (W)	Input Voltage (VAC)	Output Voltage (VDC)	Max Output Current (A)	Isolation (VAC)	Operating Temperature (°C)	Certifications
AMA24D-Y	24	90-260	12, 15	2	3000	0 to +40	EAC, UL, CE, EMC, FCC
AMA36D-Y	36	90-264	12	3	3000	0 to +40	EAC, UL, CE, EMC, FCC
AMA40D-Y	40	90-264	12	3.34	3000	0 to +40	EAC, UL, CE, EMC, FCC
AMA65D-Y	65	90-264	12, 19	5.4	3000	0 to +40	EAC, UL, CE, EMC, FCC
AMA90D-Y	90	90-264	12, 19, 24	7.5	3000	0 to +40	EAC, UL, CE, EMC, FCC
AMA120D-Y	120	90-264	12, 19, 24, 54	10	3000	0 to +40	EAC, UL, CE, EMC, FCC
AMA150D-GY	150	90-264	9, 12, 15, 19, 24, 36	12.5	3000	-30 to +70	UL, CE, EMC, FCC, PSE, BSMI
AMA160D-MGY	160	90-264	9, 12, 15, 19, 24, 48	11.5	4000	-20 to +60	UL, CE, EMC, FCC
AMA200D-GY	200	90-264	12, 13.8, 15, 19, 24, 36	16.67	3000	-30 to +70	UL, CE, EMC, FCC
AMA240D-Y	240	90-264	12	20	3000	0 to +40	CE

Medical Adapter Application



POS Terminal Application



What makes Aimtec different...

We design and manufacture unique products with distinctive features such as our AC/DC converters with an ultra-wide input range of **90-528VAC** to our DC/DC **Photovoltaic Series** featuring 100-1000, 200-1200 and 250-1500VDC input ranges.

Our product line ranges from 1/4Watt to 250Watt, over **30 package types**, and includes one of the industry's largest selections within the **1 to 3** Watt range.

Many of our products carry CE and UL certifications and feature an extended operating temperature range of up to 105 to 125 °C, with some reaching cold start temperature as low as -40 °C.

We provide outstanding technical and client **support** worldwide – in several languages – always within 24 hrs.

Aimtec's strong corporate culture is based on a unique mixture of technical vision, innovation and a strong commitment to **surpassing** our clients' expectations.

Value

Delivering products that provide exceptional performance and reliability at very affordable prices is how Aimtec defines its value proposition. Aimtec's power supplies are designed and manufactured to perform, period. The company **guarantees** the performance and reliability of its AC/DC and DC/DC converters with a three year manufacturer's warranty and a number of its LED drivers with a five year manufacturer's warranty.

Selection

With one of the widest selections of low-to-mid range power converters from 0.25 Watts to 600 Watts, Aimtec offers one of the **industry's largest** product offerings within the 1 Watt to 3 Watt range.

Lead Time

With competitive lead times complimented by a global network of **stocking distributors** who fulfill sample quantities for most models, Aimtec offers one of the shortest lead times in the industry.

Design

The depth and expertise of Aimtec's electronic design capabilities allow it to deliver highly integrated power supplies that provide energy efficient, cost-effective solutions for a multitude of applications. Aimtec's power converters are renowned for being reliable, robust products that are best in their class for their technical parameters and their **quality/cost ratio** and for exceeding industry norms in terms of features, performance, safety standards and power density.

Support

Aimtec works with a distribution network in over 102 regions **worldwide** to better support and service its clients' individual needs.



205 rue Joseph Carrier
Vaudreuil-Dorion, Quebec, J7V 4J1 Canada
Tel: +1-514-620-2722
Fax: +1-450-510-9532
Toll Free: 1-888-9-Aimtec (924-6832) North America Only
info@aimtec.com

www.aimtec.com

Scan Me



Aimtec Catalogue

Aimtec products are available through a global network of local and regional distributors and representatives.

Your Power Partner

